

YEAR

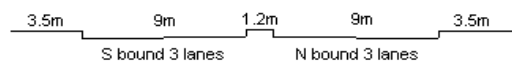
2013

LINK

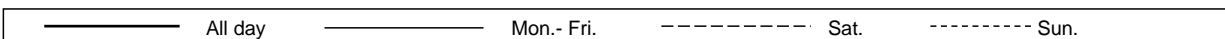
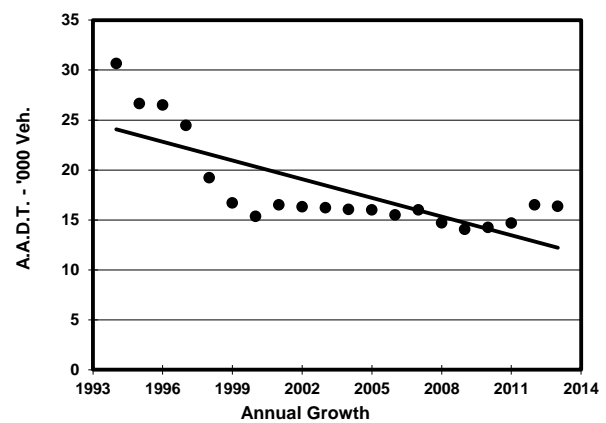
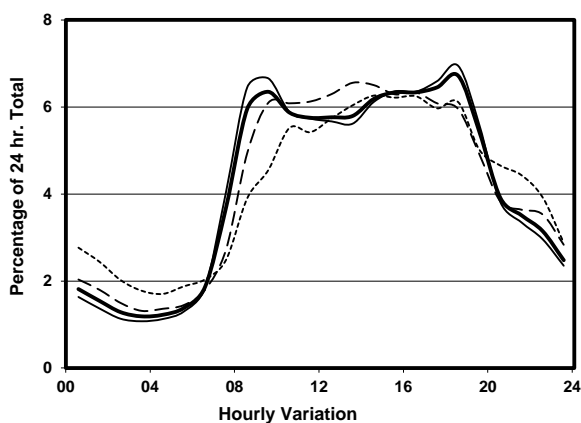
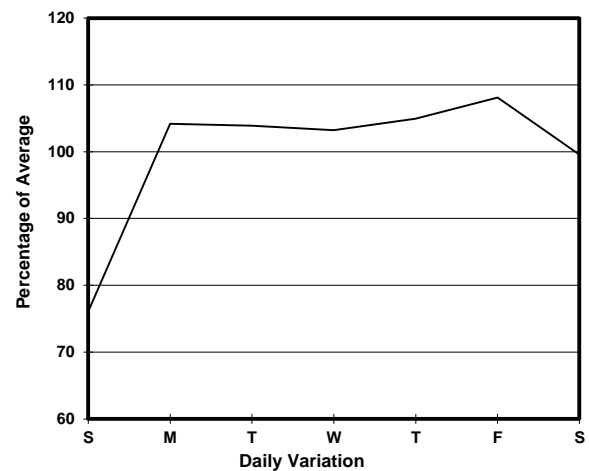
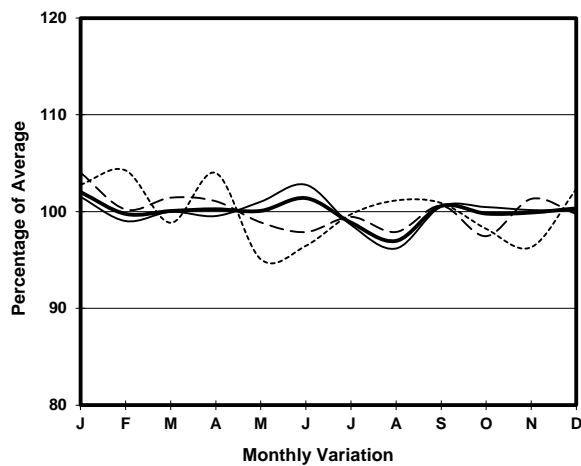
LAI CHI KOK RD (from TONKIN ST to HING WAH ST)

CORE STATION  
ROAD NETWORK  
ROAD TYPE

3008  
MAJOR  
PRIMARY DISTRIBUTOR



## 1. TRAFFIC FLOW VARIATION AND GROWTH



## 2. TRAFFIC CHARACTERISTICS (BY DIRECTION)

Parameter	All - Day	Mon. - Fri.	Sat.	Sun.
<b>SOUTH BOUND</b>				
A.A.D.T.	7130	7410	7410	6090
R 12 / 24 - %	70.5	71.5	69.8	65.9
R 16 / 24 - %	86.3	87.1	85.6	82.8
AM Peak Hour	0900-1000	0800-0900	0900-1000	0900-1000
One-way flow at AM peak hour	410	450	420	260
T - % (AM)	-	-	-	-
PM Peak Hour	1800-1900	1800-1900	1600-1700	1600-1700
One-way flow at PM peak hour	470	490	480	410
T - % (PM)	-	-	-	-
Prop.of commercial vehicles - 16 hr.	-	-	-	-
<b>NORTH BOUND</b>				
A.A.D.T.	9230	9970	9100	6540
R 12 / 24 - %	71.8	73.2	70.2	63.1
R 16 / 24 - %	87.9	89	86.2	82.2
AM Peak Hour	0900-1000	0900-1000	0900-1000	0900-1000
One-way flow at AM peak hour	630	720	590	310
T - % (AM)	-	-	-	-
PM Peak Hour	1800-1900	1800-1900	1600-1700	1600-1700
One-way flow at PM peak hour	630	720	560	380
T - % (PM)	-	-	-	-
Prop.of commercial vehicles - 16 hr.	-	-	-	-

## 3. OTHER INFORMATION AND COMMENT